

JACKSON COUNTY CHAPTER OF THE OREGON  
ASSOCIATION FOR THE EDUCATION OF YOUNG CHILDREN  
*Condado de Jackson Asociación del Oregon para la Educación de los Niños*



# TOGETHER FOR CHILDREN CONFERENCE

Juntos para la Conferencia de los Niños

**February 26-27, 2016**

*En Español el 27 de Febrero, 2016*

Medford, Oregon



*Oregon Association for the Education of Young Children*

## 2016 Partnering Sponsors

Josephine County Association for the Education of Young Children, AllCare Health, Southern Oregon Early Learning Services, The Family Connection, Jackson County Early Intervention Council, Rogue Community College Early Childhood & Elementary Education Department, Southern Oregon University School of Education, Child Care Resource Network, Jackson Care Connect, and Providence Foundation.

Information available online at

<http://www.oregonaeyc.org/>

## 8:00-9:00am REGISTRATION

RCC/SOU Higher Education Center Lobby

## 9:00am-12:00pm MORNING SESSIONS

### FA1: CREATING THE THINKING CHILD

**Presenter:** Dan Hodgins, MA, Early Childhood Consultant  
*Set One • HGD*

The kinds of “invitations” we present to children create different kinds of learning modes. Each type of invitation gets different types of thinking skills of children. Most of these “invitations” are unconscious. This presentation will explore each type of invitation and its effect on children’s learning skills. Review of research that supports learning and practices to engage children will be presented recognizing that the goal of teachers and parents is to send “invitations” that value children’s needs and interests and creates a climate of belonging.

### FA2: POSITIVE INTERACTIONS IN SPITE OF OUR BIASES AND TEMPERAMENTS

**Presenter:** Crystal Persi  
*Set Two • DIV*

As humans we are all biased in one way or another. What we do with those biases can greatly affect adult-child interactions. During this session you will explore your personal biases and temperament traits to discover how they alter your ability to meet the diverse needs of children.

### FA3: THE RAISING OF AMERICA—EARLY CHILDHOOD AND OUR ROLE IN IT

**Presenters:** Jennifer Ware, SoHealth-E/HCCSO Health Equity Coordinator and Gilda Montenegro-Fix, So-Health-E Cultural Agility Member  
*Set One • FCS*

The U.S. is the wealthiest, most powerful country in the world. So why has our child wellbeing fallen to 26<sup>th</sup>? The Raising of America interweaves discoveries from neuroscience with stories of families and community to begin to answer this question. Along with screening the first hour of The Raising of America documentary, this session will allow participants to discuss the concepts of the film and a brief workshop on ways to support and advocate for diverse communities.

### FA4: ACCESS WITH TECHNOLOGY IN THE EARLY YEARS—iPADS, APPS, AND FUN TO PROMOTE LEARNING

**Presenter:** Shar Powell, ATP, Oregon Technology Access Program—Douglas Education Service District  
*Set One • SN*

In this session attendees will explore general accessibility and best practices for using iPads to promote effective learning while having fun.

### FA5: INTRODUCTION TO THE AGES & STAGES QUESTIONNAIRES—SOCIAL EMOTIONAL ASQ-SE 2<sup>nd</sup> EDITION

**Presenters:** Liz Twombly, MS, and Kimberly Murphy, University of Oregon  
*Set One • O&A*

The ASQ Social Emotional Questionnaire is a parent completed social-emotional screening tool for children 1-month to 6-years of age. Using a family study, participants will learn how to introduce, score, and interpret results and work together with parents to support follow-up if needed. The workshop will also introduce the ASQOregon website, a free, confidential, online site where parents in Oregon can screen their children.

**12:00-1:00pm LUNCH BREAK**

**1:00-4:00pm AFTERNOON SESSIONS**

## **FP1: THE WHOLE-BRAIN CHILD IN THE CLASSROOM**

**Presenter:** Dr. Tina Payne Bryson, The Center for Connection

*Set One • UGB*

This session presents practical strategies based on cutting-edge brain science and applies it to teacher-student interactions. The best teaching strategies are the ones that not only help instructors maintain order and cover material effectively, but that also challenge kids to become all that they're meant to be. Tina will use video, discussion, stories, and lots of personal experience to help her audience think more deeply about who they want to be as individuals, and how they want to interact with the young minds they're nurturing and helping to grow. One primary focus of this workshop is the importance of creating a culture within a classroom and school where students, parents, teachers, and administrators all recognize the crucial role of relationships in learning and brain development.

## **FP2: CHILDREN THAT TAKE US TO THE END OF OUR ROPE**

**Presenter:** Dan Hodgins, MA, Early Childhood Consultant

*Set One • UGB*

Challenging behaviors of children are often the most common discussions that occur between professionals in early childhood settings. Are you an adult who is working with a child who Takes You to the End of Your Rope? If you are, this presentation is for you. You will increase your awareness of why challenging behaviors occur and what are some strategies that will assist in preventing these behaviors.

## **FP3: READINESS TO LEARN—EXPLORING THE CONNECTIONS BETWEEN RELATIONSHIPS AND LEARNING USING THE SCIENCE OF BRAIN DEVELOPMENT**

**Presenter:** Sherri Alderman, MD, MPH, IMH-E, FAAP Oregon Health Authority

*Set Two (Pending) • HGD*

We will explore the neuroscience of brain development, beginning prenatally, tracing the development of healthy relationships and self-regulation. Topics covered include fetal programming, attachment, parental sensitivity and confidence and impact on learning. Participants will practice a problem-solving method using the parallel process for a situation they choose.

## **FP4: TECHNOLOGY THAT ENCOURAGES MOVEMENT AND TOUCH WITH SUCCESS AND RENEWED INTEREST**

**Presenter:** Shar Powell, ATP, Oregon Technology Access Program—Douglas Education Service District and Sharon

**Osborne, OTR, Douglas Education Service District**

*Set One • SN*

This hands-on session is all about movement, touch, sound, and play. Putting it all together for those students that need a little more encouragement. We will be exploring "touch," "sound," and "movement" with the MakeyMakey and iPad to explore different textures and switches to do some cause and effect. We will also cover additional apps and tools that you may not know about.

## **FP5: FAMILY CONNECTIONS**

**Presenter:** Deborah Murphy, M.Ed., Rogue Community College

*Set One • FCS*

How do we connect with families and create good communication systems? This session will explore how to create and keep effective connections, as well as examine new and familiar techniques to foster family ties.

# 2016 CONFERENCE PROGRAM for SATURDAY, FEBRUARY 27th

## 8:00-8:45am REGISTRATION & REFRESHMENTS / INSCRIPCIÓN Y BOCADILLOS

RCC/SOU Higher Education Center Lobby / Centro de la Educación Postsecundaria de RCC/SOU

## 8:45-9:45am KEYNOTE SESSIONS / SESIONES PRINCIPAL

### SK1: PREVENTING THE EXTINCTION OF CHILDHOOD

**Presenter:** Dan Hodgins, MA, Early Childhood Consultant

Set One • HGD

Caution!!!! Childhood seems to be disappearing rapidly. This presentation will discuss the following topics:

- What's Lost? Places for children to Play, Rites of Passage, Laughing, Rearing children
- What is the New Family Like? Mobile families, Working/Unemployed families, Separated/Divorced families
- Status of Play? Decrease of playtime, Type of Play, Recess being removed
- What do We Need to Do Quickly? Establishing Rituals, Celebrate Differences, Allow Risk Taking, Create Communities of Belonging

If you are concerned about the changing role of children and families come join us in Preventing the Extinction of Childhood.

### SK2: THE POWER OF REFLECTION—SEEING WITH NEW EYES

**Presenter:** Mary Foltz, Principal, Mary Foltz & Associates, LLC; VP of the Oregon Infant Mental Health Association

Set One • HGD

*"Helping parents (and early childhood educators) to observe their child and learn to 'read' their actions and words are at the heart of the reflective model." Arietta Slade*

Working with young children and their families is deeply rewarding and frequently very demanding. We seek to understand what individual children need and how best to support them as they grow and develop. By slowing down, reflecting on what children are "telling" us, and noting our own responses we are able to cultivate greater understanding, compassion, and effectiveness with each child and his or her family. The keynote explores the elements and powerful benefits of reflective practice in our work.

## 10:00am-12:00pm MORNING SESSIONS / SESIONES DE LA MAÑANA

### SA1: RESPONSIVE CAREGIVING IN INFANT AND TODDLER PROGRAMS—THE KEY TO HEALTHY DEVELOPMENT

**Presenter:** Lauren Peterson, M.Ed., The Research Institute at Western Oregon University

Set Two • HGD

This session will examine theories of responsive caregiving and attachment as they relate to healthy child outcomes. Participants will explore practices in responsive caregiving and will examine, select and practice strategies that are critical in developing a responsive caregiving environment for infants and toddlers.

### SA2: GOODNIGHT MOON! YOU CAN DO THAT WITH A CLOTHESLINE? AND WHERE DO YOU HAVE AN ITCH?—A LOOK AT KINDERGARTEN READINESS

**Presenter:** Cathleen Price, MA

Set Two (Pending) • LEC

Are you seeking a straightforward kindergarten readiness curriculum planning strategy? Searching for another tool to make the connection between child care and home and kindergarten? Then this is the workshop for you! Be ready to laugh, chant, and move as we explore the kindergarten readiness curriculum possibilities found through exploring children's literature.

## **SA3: INTRODUCTION TO THE AGES & STAGES--SOCIAL EMOTIONAL 2<sup>nd</sup> EDITION (ASQ-SE)**

**Presenters:** Liz Twombly, MS, and Kimberly Murphy, University of Oregon

*Set One* • O&A

The ASQ Social Emotional Questionnaire is a parent completed social-emotional screening tool for children 1-month to 6-years of age. Using a family study, participants will learn how to introduce, score, and interpret results and work together with parents to support follow-up if needed. The workshop will also introduce the ASQOregon website, a free, confidential, online site where parents in Oregon can screen their children.

## **SA4: MIND IN THE MAKING—THE SEVEN ESSENTIAL LIFE SKILLS EVERY CHILD NEEDS**

**Presenter:** Pam Thompson Arbogast, MS, SOESD Early Childhood Services

*Set One* • HGD

Using Ellen Galinsky's groundbreaking book, *Mind in the Making*, we'll explore the research, concepts and resources available to support children in developing the essential skills of Focus, Self Control, Perspective Taking, Communicating, Making Connections, Critical Thinking, Taking on Challenges, and Self-Directed, Engaged Learning.

## **SA5: THE FOUNDATIONS FOR LEARNING—INTRO TO HEALTHY FOUNDATIONAL SYSTEMS**

**Presenter:** Paula Lynam, M.Ed.

*Set One* • HGD

This class is designed to help professionals working with young children understand the developmental foundations which form the base for healthy learning and functioning. Attendees will increase their ability to recognize areas requiring additional support. Relevant hand-outs, songs, rhymes, games and activities to deepen the learning and to use with children will be provided.

## **SA6: GARDENING WITH YOUNG CHILDREN**

**Presenters:** Dr. Michelle Homer Anderson, Gina Dusenbury, M.Ed., & Amy Lindgren, Southern Oregon Head Start

*Set One* • LEC

This interactive session will explore the unique and expansive learning opportunities offered by gardening with young children.

## **SA7: POSTIVE PLAYTIME!**

**Presenter:** Megan Barella, Certified Positive Discipline Parent Educator

*Set One* • FCS

Positive PlayTime! is an interactive playgroup and parenting class dedicated to helping families thrive by strengthening parent-child bonds and positive parenting communities. Session participants will gain cutting-edge tools in brain science and Positive Discipline, as well as skills in providing parenting support and empowerment, to ensure optimal brain development in the critical period of early childhood in children.

## **SA8: SLOW DOWN, YOU MOVE TOO FAST...REFLECTIVE PRACTICES AT WORK**

**Presenter:** Mary Foltz, Principal, Mary Foltz & Associates, LLC; VP of the Oregon Infant Mental Health Association

*Set One* • FCS

*"Don't just do something, stand there and pay attention. Your child is trying to tell you something."* Sally Provence

Sometimes life gets so busy with the day to day challenges of working with young children that it becomes difficult to "see" what is actually taking place in front of us. We run the risk of becoming more reactive and less responsive. By cultivating a mindful, reflective approach we gain insight into ourselves and others and generate possibilities for meaningful connections in our programs. This interactive session will explore specific ways to incorporate reflective practice in our daily work with children and families.

## **SA9: PROMOTING RESILIENCY IN EARLY CHILDHOOD— EXAMINING RISK & PROTECTIVE FACTORS**

**Presenter:** Aoife Rose Magee, Ph.D., Portland State University  
*Set Two • HGD*

Participants will examine how risk and protective factors influence developmental outcomes for young children and how to promote resiliency. Groups will work together to apply key concepts related to risk and protective factors to case studies and then reflect upon the actual outcomes after completing the activity.

## **SA10: TEACHERS AS LEADERS—DEVELOPING OUR OWN IDENTITY**

**Presenter:** Dr. Erin Wilder, Southern Oregon University  
*Set One • PPLD*

A teacher's identity is the foundation from which one teaches. Participants will explore identity development and how they can evolve in authentic ways, reflecting on who they are inside and outside of the classroom. This is an interactive session—participants will be encouraged to share their stories of growth and development while creating clear goals for future growth as teacher leaders.

## **12:00-1:00pm LUNCH BREAK / PAUSA PARA EL ALMUERZO**

**NOTE:** *Session SP2: Darkness to Light will begin at 12:30pm as it runs 2.5-hours.*

## **1:00-3:00pm AFTERNOON SESSIONS / SESIONES DE LA TARDE**

### **SP1: LOOKING THROUGH THE EYES OF BOYS AND GIRLS**

**Presenter:** Dan Hodgins, MA, Early Childhood Consultant  
*Set One • UGB*

*Do boys really learn differently than girls? How can I nurture attachment and bonding while being firm? How do I deal with challenging issues with boys? What does a supportive environment for boys look like? What about those boys?* Many teachers and parents are asking these questions and more. Increase your awareness of boys: how they learn, how to educate them based on brain science research, and how to create the ultimate environment that supports boys' needs.

### **SP2: DARKNESS TO LIGHT—STEWARDS OF CHILDREN**

**Presenter:** Carolyn Rotar, BS, Southern Oregon Head Start  
*Set One • HSN*

Session participants will gain education on how to prevent, recognize, and react responsibly to child sexual abuse.



**NOTE: THIS SESSION BEGINS AT 12:30PM**  
*We suggest you bring your own lunch due to limited time.*

### **SP3: USING MINDFUL REFLECTION AND COMMUNICATION PRACTICES WITH CULTURALLY DIVERSE CHILDREN**

**Presenter:** Aoife Rose Magee, Ph.D., Portland State University  
*Set Two • DIV*

Participants in this training will explore how to become a culturally responsive early childhood practitioner while working with children who come from backgrounds different from the teacher. The Deficit Thinking Model and how attributions guide an adult's response to a child's behavior will be discussed. Participants will learn the 6 step process for mindful reflection and communication that early childhood educators and caregivers can use when interacting with children from culturally diverse backgrounds.



## **SP4: MUSIC AND MOVEMENT ON MY MIND**

**Presenter:** **Mary Foltz**, Principal, Mary Foltz & Associates, LLC; VP of the Oregon Infant Mental Health Association  
*Set One • LEC*

Come and enjoy this time of singing and moving together. You'll leave invigorated and with fun ideas to use in your program. Most definitely an interactive session!

## **SP5: BUILDING EXECUTIVE FUNCTION SKILLS THROUGH EXPLORATION AND PLAY**

**Presenter:** **Pam Thompson Arbogast, MS**, SOESD Early Childhood Services  
*Set Two (Pending) • HGD*

With thoughtful planning and a few, simple, low cost materials, you can design playful environments that engage children in learning while they build the critical skills of making connections, communicating, critical thinking, and taking on challenges. This idea filled session will focus especially on outdoor play spaces. NOTE: Participants are encouraged to also attend the morning session (SA4) on the *Mind in the Making* or to have prior knowledge of Executive Function Skills.

## **SP6: KINDERYARDS—PUTTING THE GARDEN BACK IN KINDERGARTEN**

**Presenter:** **Leann Tourzan**  
*Set One • LEC*

The transformation of school grounds is gaining momentum internationally as children are faced with new challenges that educators are just beginning to understand. Brain Research points to the importance of outdoor play in Early Childhood Development. Schoolyards have become sterile environments lacking natural resources and quality sensory stimulation. Children can learn many things through interaction with nature since children learn through experience. I have realized that ensuring that children have access to inspiring outdoor playgrounds is necessary for improving their academic performance and for long term health. Kinderyards provide hope for the children, the teachers and for the future.

## **SP7: EVALUATING SCREENTIME IN EARLY CHILDHOOD EDUCATION**

**Presenter:** **Lauren Peterson, M.Ed.**, The Research Institute at Western Oregon University  
*Set Two (Pending) • LEC*

This workshop will examine the various forms of technology, from televisions to tablets, in early childhood programs with the following objectives: explore the impact of the use of screens on early childhood learning; explore the impact of screens on the developing brain and body; make informed decisions about the use of screens in your program.

## **SP8: EARLY INTERVENTION/EARLY CHILDHOOD SPECIAL EDUCATION— FROM OBSERVATION TO IMPLEMENTATION OF SERVICES**

**Presenter:** **Inga Leed-Crews**  
*Set One • SN*

In this workshop, participants will learn what may warrant a referral to an Early Intervention/Early Childhood Special Education (EI/ECSE) agency and how to discuss concerns with parents. In addition, information will be provided about the referral and evaluation processes. We will also discuss what to expect during initial meetings as well as the variety of EI/ECSE services available.



**STAY IN TOUCH WITH JCAEYC & OAEYC ALL YEAR!**  
Visit and LIKE both the **OregonAEYC** & the **Jackson County Chapter of OregonAEYC** on Facebook today.

## SP9: SUSTAINABLE WELL-BEING FOR TEACHERS, PROVIDERS, AND PARENTS

**Presenter: Paula Lynam, M.Ed.**

*Set Two • PPLD*

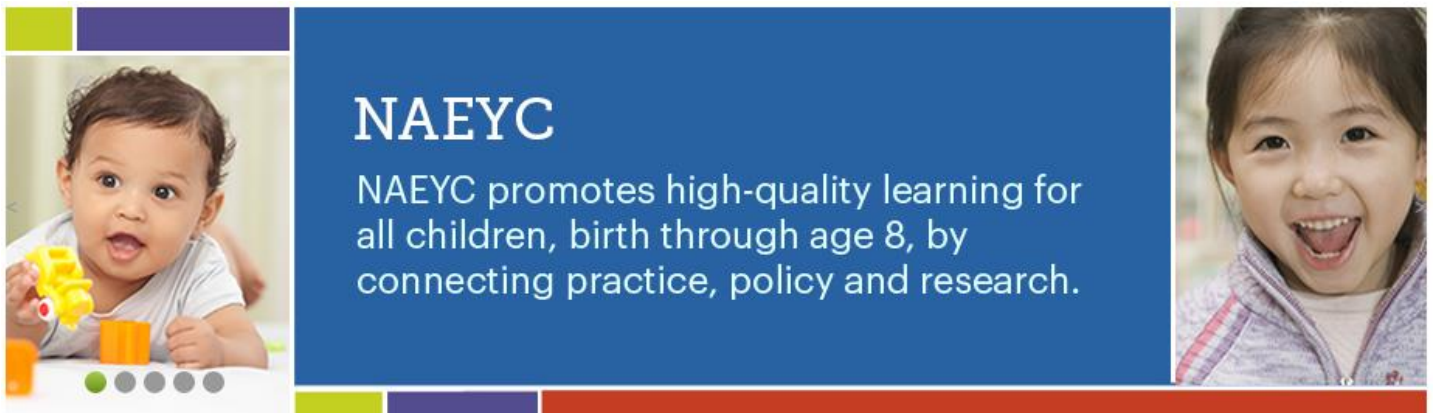
Explore your talents and passions and what it would take for you to attain and maintain a higher level of well-being; develop your own supporting practices and goals with clarity and determination and understand the affects your well-being has on the children in your care.

## SP10: BEST PRACTICES IN A TWO-WAY IMMERSION BILINGUAL KINDERGARTEN CLASSROOM

**Presenter: Jamie Cooper, BA, Licensed Teacher with Bilingual Endorsement, Jewett Elementary School**

*Set One • LEC*

In this workshop we will discuss and explore best instructional practices within a bilingual classroom, focusing on primary grades, discuss the key components to setting up and maintaining a successful bilingual program to ensure bilingualism and bi-literacy by fifth grade and how our school has been successful at creating community between school and home, offering a substantial amount of family support.

A graphic for NAEYC featuring a blue background with white text. On the left is a photo of a young child playing with blocks, and on the right is a photo of a young girl smiling. The text reads: "NAEYC promotes high-quality learning for all children, birth through age 8, by connecting practice, policy and research." The graphic is framed by a colorful border of green, purple, and red.

**NAEYC**  
NAEYC promotes high-quality learning for all children, birth through age 8, by connecting practice, policy and research.

Membership in the National Association for the Education of Young Children (NAEYC) is the best way for you to access all of the resources you need to help you be the best educator you can be. When you sign up to join NAEYC, you will immediately have access to all [member benefits](#), including exclusive members-only discounts and information from top experts in the field. *When you join NAEYC, you can choose to also become a member of the Jackson and/or Josephine County Chapters of the Oregon Associate for the Education of Young Children.*

NAEYC promotes high-quality early learning for all children, birth through age 8, by connecting practice, policy and research. We advance a diverse, dynamic early childhood profession and support all who care for, educate, and work on behalf of young children. No other association gives you access to the same amount of information from leading early childhood experts in the field. NAEYC membership ensures you will have all of the tools needed to excel in your job, grow in your career, and stay connected to a professional network of educators across the country.

**Learn More about NAEYC Member Benefits at <http://www.naeyc.org/membership/benefits>**

**JOIN THE NATIONAL ASSOCIATION FOR THE EDUCATION OF YOUNG CHILDREN TODAY AND RECEIVE A DISCOUNTED CONFERENCE PRICE!**



**8:00-8:45am INSCRIPCIÓN Y BOCADILLOS / REGISTRATION & REFRESHMENTS**

*Centro de la Educación Postsecundaria de RCC/SOU / RCC/SOU Higher Education Center Lobby*

**8:45-9:45am SESIÓN PRINCIPAL / KEYNOTE SESSION**

**SPK: ¡CONVOCATORIA DE ALTAVOZ MUY PRONTO!**

**Presenter: Alejandra Moreno**

**SPA (10:00am-12:00pm): Mejores Prácticas en un Salon Bilingüe de Kinder**

**Presenter: Jaime Cooper, BA, Maestra Registrada con Aprobación Bilingüe, Jewett Elementary School**  
*Set One • LEC*

En este taller vamos a discutir y explorar las mejores prácticas de instrucción en un salón bilingüe, centrándose en los grados primarios, discutiendo los componentes claves para la creación y mantenimiento de un programa bilingüe exitoso para garantizar el bilingüismo y bi-alfabetización para cuando lleguen a quinto grado y cómo nuestra escuela ha tenido éxito creando comunidad entre la escuela y el hogar, ofreciendo un gran apoyo a la familias.

**12:00-1:00pm PAUSA PARA EL ALMUERZO / LUNCH BREAK**

**SPP (1:00-3:00pm): EL LENGUAJE ES LA CLAVE—PROMOVIENDO LAS INTERACCIONES INTENCIONALES ENTRE NIÑOS Y ADULTOS**

**Presenter: Martha Ibarra**

*Set One • LEC*

El desarrollo del lenguaje oral es uno de los indicadores clave del éxito futuro en la lectura y la escuela en general. Los niños pequeños desarrollan sus habilidades lingüísticas a través de las interacciones intencionales con los adultos que los cuidan. Esta formación se centra en las formas en que los adultos pueden participar intencionalmente con los niños en conversaciones ricas en lectoescritura, utilizando las técnicas de lectura dialógica.

---

*Condado de Jackson Asociación del Oregon para la Educación de los Niños—***FORMA DE REGISTRACIÓN**

Nombre \_\_\_\_\_ Teléfono \_\_\_\_\_

Dirección \_\_\_\_\_ Email \_\_\_\_\_

Ciudad \_\_\_\_\_ Estado \_\_\_\_\_ CP \_\_\_\_\_

**El ultimo día para registrarse es el 13 de Febrero en: Oregon AEYC, PO Box 1455, Tualatin, OR 97062**

El precio de la Conferencia es \$40, o \$20 si usted es un miembro de NAEYC. Por favor escriba su cheque a nombre de OAEYC. Si usted desea registrarse pagando con dinero en efectivo puede ir a la oficina de OAEYC (PO Box 60, Gladstone, OR 97027). Habrá becas de \$20 disponibles de la Programa Estatal de Becas de Oregon si lo necesita. El pago no es reembolsable, pero si se puede transferir a otra persona.

Colegio de crédito está disponible por un cargo adicional de \$55 a través de la Universidad de Southern Oregon. Las personas que deseen recibir crédito es imprescindible que asistan a toda la conferencia viernes y sábado y el seguimiento con un papel después de la Conferencia. Asegúrese de registrarse para los dos días en su Forma de Registración!

# TOGETHER FOR CHILDREN CONFERENCE 2016

Registration Form, Page 1 of 2

<b>Full Name of Attendee</b>	<b>Phone Number</b> ___ Cell    ___ Work    ___ Home
<b>Email Address</b>	___ Work    ___ Home
<b>Mailing Address</b> (Street, City, State and Zip)	
<b>This year, I am attending the Together for Children Conference as a representative of:</b> (CHECK ALL THAT APPLY)	
<input type="checkbox"/> Early Childhood Educator, In Home	<input type="checkbox"/> Health Professional
<input type="checkbox"/> Early Childhood Educator, Small Center	<input type="checkbox"/> Human/Social Service Professional
<input type="checkbox"/> Early Childhood Educator, Large Center	<input type="checkbox"/> Library Professional
<input type="checkbox"/> Home Visitor	<input type="checkbox"/> Parent
<input type="checkbox"/> Parent Educator	<input type="checkbox"/> Community Representative
<input type="checkbox"/> K-8 Educator	<input type="checkbox"/> Program Administrator
<input type="checkbox"/> Medical Provider	<input type="checkbox"/> Other: _____
<b>For which organization(s) do you work and/or advocate?</b> _____	
<b>What county or counties do you work in?</b> (CHECK ALL THAT APPLY)	
___ Jackson    ___ Josephine    ___ Other(s): _____	
<b>HOW TO REGISTER:</b>	
<ul style="list-style-type: none"><li>• <b>Pre-Registration</b> is <u>strongly</u> advised.</li><li>• <b>On-Site Registration</b> will be available on a <u>space-available basis</u> only and carries with it an additional \$15.00 fee.</li><li>• <b>Complete both pages of this Registration Form</b> for each person attending the conference.</li><li>• No registrations accepted after February 20<sup>th</sup> except On-Site.</li><li>• Conference fees are <b>non-refundable</b>, but they are <b>transferable</b> to another person.</li></ul>	
<b>ALL REGISTRATIONS WILL BE PROCESS BY Oregon AEYC:</b>	
<ul style="list-style-type: none"><li>• You can <b>MAIL</b> this registration form to OregonAEYC – TFC Conference, PO Box 60, Gladstone, OR 97027,</li><li>• You can <b>FAX</b> the form to 503-496-0520, or</li><li>• You can <b>EMAIL</b> the form to <a href="mailto:oaeyc@oregonaeyc.org">oaeyc@oregonaeyc.org</a></li></ul>	
<b>REGISTRATION COSTS</b>	<b>PAYMENT OPTIONS</b>
<b>Friday, February 26, 2016</b>	___ Mail a <b>Check or Money Order</b> made payable to: OregonAEYC PO Box 60, Gladstone, OR 97027
<input type="checkbox"/> \$20 NAEYC Member (ID# _____)    \$ _____	___ <b>Purchase Order</b> PO#: _____
<input type="checkbox"/> \$40 Non-Member    \$ _____	Agency: _____
<input type="checkbox"/> \$20 Students & Seniors    \$ _____	___ <b>Credit Card</b> (VISA / MasterCard / Discover / AMEX)
<b>Saturday, February 27, 2016</b>	_____-_____-_____-_____-_____-_____-_____-_____-_____-_____-    Exp. ___/___
<input type="checkbox"/> \$20 NAEYC Member (ID# _____)    \$ _____	Card Holder's Name: _____
<input type="checkbox"/> \$40 Non-Member    \$ _____	Cardholder's Signature: _____
<input type="checkbox"/> \$20 Students & Seniors    \$ _____	
<input type="checkbox"/> \$15 On-Site Registration    \$ _____	
<b>TOTAL PAID</b> \$ _____	

**College Credit is available (for an additional fee of \$55) through Southern Oregon University. Those wishing to receive college credit must sign up and pay for the credit at the Friday session and attend the entire conference (both Friday and Saturday). Be sure to register for both days on your Conference Registration Form!**

# TOGETHER FOR CHILDREN CONFERENCE 2016

Registration Form, Page 2 of 2

PLEASE INDICATE WHICH DATE(S) YOU PLAN TO ATTEND THE CONFERENCE.

<input type="checkbox"/>	I will attend <b>ONLY</b> Friday, February 26 <sup>th</sup> , 2016.	<input type="checkbox"/>	I will attend <b>ONLY</b> Saturday, February 27 <sup>th</sup> , 2016.	<input type="checkbox"/>	I will attend <b>BOTH</b> Friday & Saturday, February 26 <sup>th</sup> & 27 <sup>th</sup> , 2016.
--------------------------	--	--------------------------	--	--------------------------	--

IF ATTENDING FRIDAY, PLEASE INDICATE YOUR 1<sup>st</sup>, 2<sup>nd</sup>, and 3<sup>rd</sup> CHOICE FOR SESSIONS TO ATTEND.

FRIDAY, February 26 <sup>th</sup> , Morning Sessions		FRIDAY, February 26 <sup>th</sup> , Afternoon Sessions	
	<b>FA1:</b> Creating the Thinking Child		<b>FP1:</b> The Whole-Brain Child in the Classroom
	<b>FA2:</b> Positive Interactions in Spite of our Biases and Temperaments		<b>FP2:</b> Children that Take Us to the End of Our Rope
	<b>FA3:</b> The Raising of America—Early Childhood and our Role in It		<b>FP3:</b> Readiness to Learn—Exploring the Connections between Relationships & Learning using the Science of Brain Development
	<b>FA4:</b> Access with Technology in the Early Years—iPads, Apps, and Fun to Promote Learning		<b>FP4:</b> Technology that Encourages Movement and Touch with Success and Renewed Interest
	<b>FA5:</b> Introduction to the Ages & Stages Questionnaires—Social Emotional ASQ-SE 2 <sup>nd</sup> Edition		<b>FP5:</b> Family Connections

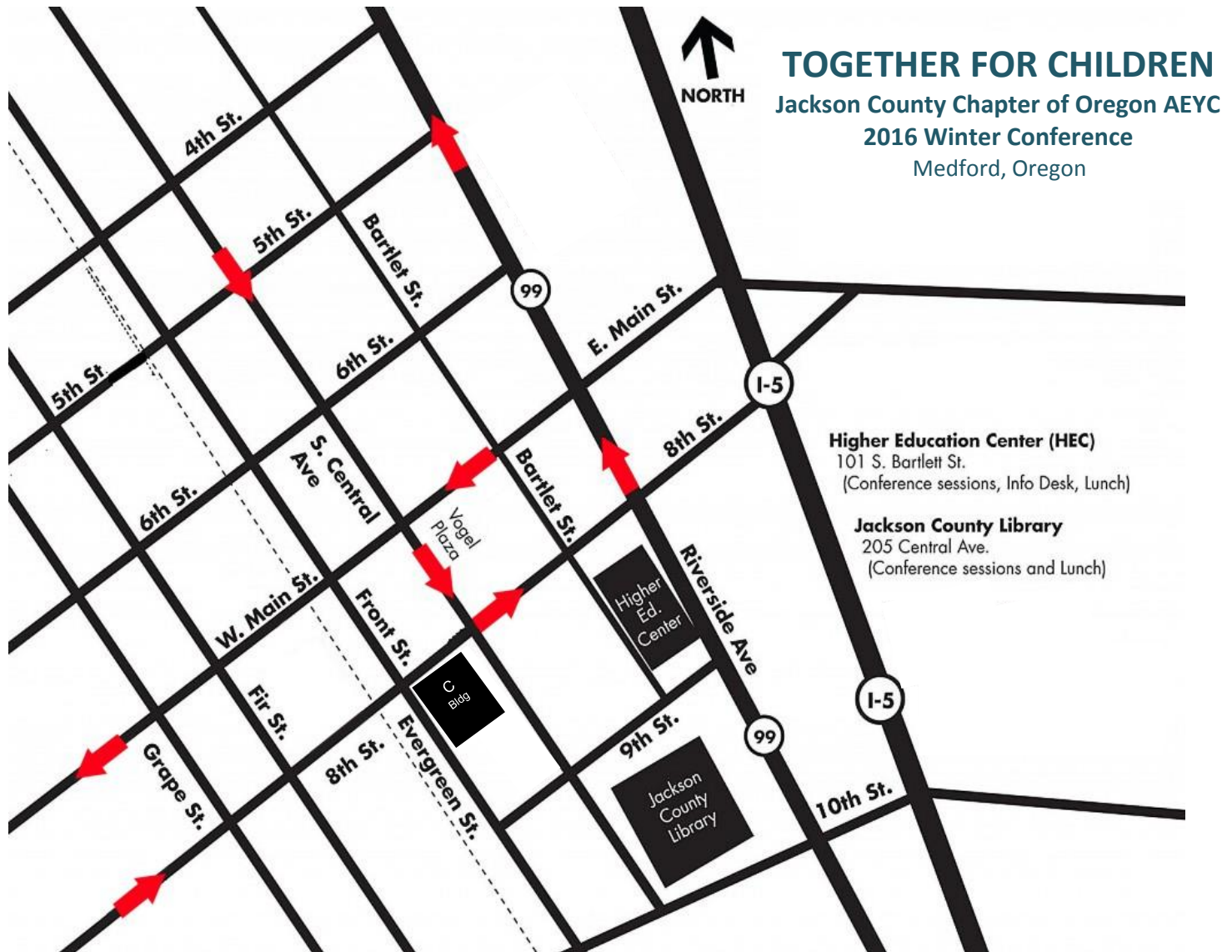
IF ATTENDING SATURDAY, PLEASE INDICATE YOUR 1<sup>st</sup>, 2<sup>nd</sup>, and 3<sup>rd</sup> CHOICE FOR SESSIONS TO ATTEND.

SATURDAY, February 27 <sup>th</sup> , Keynote Sessions	
<b>SK1:</b> Preventing the Extinction of Childhood	<b>SK2:</b> KEYNOTE TOPIC ANNOUNCEMENT COMING SOON!

SATURDAY, February 27 <sup>th</sup> , Morning Sessions		SATURDAY, February 27 <sup>th</sup> , Afternoon Sessions	
	<b>SA1:</b> Responsive Caregiving in Infant and Toddler Programs—The Key to Healthy Development		<b>SP1:</b> Looking Through the Eyes of Boys and Girls
	<b>SA2:</b> <i>Goodnight Moon!</i> You can do that with a clothesline? And where do you have an itch?—A Look at Kindergarten Readiness		<b>SP2:</b> Darkness to Light—Stewards of Children
	<b>SA3:</b> Introduction to the Ages & Stages Questionnaires—Social Emotional ASQ-SE 2 <sup>nd</sup> Edition		<b>SP3:</b> Using Mindful Reflection and Communication Practices with Culturally Diverse Children
	<b>SA4:</b> Mind in the Making—The Seven Essential Life Skills Every Child Needs		<b>SP4:</b> SESSION TOPIC ANNOUNCEMENT COMING SOON!
	<b>SA5:</b> The Foundations for Learning—Introduction to Health Foundational Systems		<b>SP5:</b> Building Executive Functions through Exploration and Play
	<b>SA6:</b> Gardening with Young Children		<b>SP6:</b> Kinderyards—Putting the Garden back in Kindergarten
	<b>SA7:</b> Positive Playtime!		<b>SP7:</b> Evaluating Screen Time in Early Childhood Education
	<b>SA8:</b> SESSION TOPIC ANNOUNCEMENT COMING SOON!		<b>SP8:</b> Early Intervention/Early Childhood Special Education—From Observation to Implementation of Services
	<b>SA9:</b> Promoting Resiliency in Early Childhood—Examining Risk and Protective Factors		<b>SP9:</b> Sustainable Well-Being for Teachers, Providers, and Parents
	<b>SA10:</b> Teachers as Leaders—Developing our own Identity		<b>SP10:</b> Best Practices in a Two-Way Immersion Bilingual Kindergarten Classroom

# MAP & DIRECTIONS / MAPA Y DIRECCIONES

*College Credit is available (for an additional fee of \$55) through Southern Oregon University. Those wishing to receive college credit must sign up and pay for the credit at the Friday session and attend the entire conference (both Friday and Saturday). Be sure to register for both days on your Conference Registration Form!*



**TOGETHER FOR CHILDREN**  
 Jackson County Chapter of Oregon AEYC  
 2016 Winter Conference  
 Medford, Oregon

**Higher Education Center (HEC)**  
 101 S. Bartlett St.  
 (Conference sessions, Info Desk, Lunch)

**Jackson County Library**  
 205 Central Ave.  
 (Conference sessions and Lunch)

## TRAVELING I-5 FROM NORTH TO SOUTH:

1. Take Medford Exit 30, Crater Lake Highway.
2. At light turn right on Crater Lake Highway.
3. Turn left on Court Street.
4. Turn left on Central.
5. For HEC: Turn left on East Eighth or Ninth to South Bartlett.
6. For C BLDG: Turn right on West Main and left on Front Street.

## TRAVELING I-5 FROM SOUTH TO NORTH:

1. Take Medford Exit 27 for Medford.
2. Turn Left to head toward downtown.
3. At the second light, turn right onto Riverside (Hwy 99) to continue toward downtown.
4. For HEC: The building is located at the corners of East Ninth and Eighth Streets and South Bartlett and Riverside.
5. For C BLDG: Turn left on West Main and left on Front Street.

## VIAJAR I-5 DE NORTE A SUR:

1. Tome Medford Éxito 30, Crater Lake Highway.
2. A su vez, la luz justo en Crater Lake Highway.
3. Gire a la izquierda en la calle Court.
4. Gire a la izquierda en Centroamérica.
5. Para HEC: Gire a la izquierda en el este de octavo o noveno al Sur Bartlett.
6. Para C EDIFICIO: Gire a la derecha en West Main y la izquierda en la calle delantera.

## VIAJAR I- 5 DE SUR A NORTE:

1. Tome la salida 27 para Medford.
2. Gire a la izquierda para dirigirse hacia el centro.
3. En el segundo semáforo, gire a la derecha en Riverside (Hwy 99) para continuar hacia el centro.
4. Para HEC: El edificio está situado en las esquinas de Oriente Novena y Octava Calles y Sur de Bartlett y Riverside.
5. Para C EDIFICIO: Gire a la izquierda en West Main y la izquierda en la calle delantera.

# TOGETHER FOR CHILDREN CONFERENCE 2016

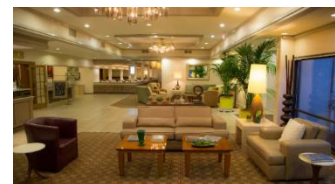
## QUESTIONS / PREGUNTAS

If you have any questions about the conference, please call Lorena Juarez a (541) 842-2610 or email [lorena\\_juarez@soesd.k12.or.us](mailto:lorena_juarez@soesd.k12.or.us).

*Si usted tiene alguna pregunta acerca de la conferencia, por favor llame a Lorena Juarez al (541) 842-2610 o correo electrónico [lorena\\_juarez@soesd.k12.or.us](mailto:lorena_juarez@soesd.k12.or.us).*

## CONFERENCE LODGING / ALOJAMIENTO CONFERENCIA

For those traveling from out of area, JCAEYC has secured a discounted room rate at the Inn at the Commons, <http://innatthecommons.com>. The nightly rate is \$75 for a single queen room and \$85 for double queen room. To be eligible for this discount, conference attendees must reserve their rooms by February 15, 2016.



*Para aquellos que viajan desde fuera del área, JCAEYC ha asegurado una tarifa con descuento en el Inn at the Commons, <http://innatthecommons.com>. La tarifa por noche es de \$ 75 por una habitación doble y \$ 85 para doble habitación de matrimonio. Para tener derecho a este descuento, asistentes a la conferencia deben reservar sus habitaciones el 15 de febrero, el 2016.*

## CONFERENCE SCHOLARSHIPS / BECAS DE LA CONFERENCIA

The Oregon Statewide Scholarship Program of the Oregon Center for Career Development in Childhood Care & Education (OCCD) has scholarships available for child care providers and those working with children in early childhood settings who are at Step 3-8.5. Go to [www.pdx.edu/occd](http://www.pdx.edu/occd) and click on Community Based Training Scholarship Program or call toll free (877) 725-8535. Locally, you can contact Lorena at the Child Care Resource Network at (541) 842-2610 or email her at [lorena\\_juarez@soesd.k12.or.us](mailto:lorena_juarez@soesd.k12.or.us). The scholarship will cover the pre-registration member rate \$20. **You will be responsible for paying any balance, if applicable. You should submit your scholarship application to OCCD no later than January 22nd. SCHOLARSHIPS ARE LIMITED, so apply early!** You will be notified if you are too late and need to make other arrangements.

El Programa de Becas de Oregon a nivel estatal del Centro de Oregon para el Desarrollo Profesional en el Cuidado de la Infancia y Educación (OCCD) tiene becas disponibles para los proveedores de cuidado infantil y los que trabajan con los niños en programas para niños pequeños que están en el paso 3 a 8.5. Ir a [www.pdx.edu/occd](http://www.pdx.edu/occd) y haga clic en Programa de Becas de Capacitación Comunitaria o llame gratis al (877) 725-8535. A nivel local, puede ponerse en contacto con Lorena en la Red de Recursos de Cuidado de Niños al (541) desde 842 hasta 2610 o por correo electrónico a [lorena\\_juarez@soesd.k12.or.us](mailto:lorena_juarez@soesd.k12.or.us). La beca cubrirá la tasa miembro de pre-inscripción de \$ 20. **Usted será responsable de pagar el saldo, si procede. Usted debe presentar su solicitud de beca para OCCD a más tardar el 22 de enero. ¡BECAS es limitado, por aplicar temprano!** Se le notificará si usted es demasiado tarde y la necesidad de hacer otros arreglos.

## CORE KNOWLEDGE CATEGORIES / CATEGORÍAS DE CONOCIMIENTO CENTRAL

DIV = Diversity / Diversidad

FCS = Families & Community Systems / Sistemas Familiares y Comunitarios

HSN = Health, Safety, & Nutrition / Seguridad y Nutrición

HGD = Human Growth & Development / Crecimiento y Desarrollo Humano

LEC = Learning Environments & Curriculum / Ambientes de Aprendizaje y Plan de Estudios

OA = Observation & Assessment / Observación y Evaluación

PPLD = Personal, Professional, & Leadership Development / Desarrollo Personal, Profesional y de Liderazgo

PM = Program Management / Administración de Programas

UGB = Understanding & Guiding Behavior / Entendimiento y Orientación de Conducta

SN = Special Needs / Necesidades Especiales



JACKSON COUNTY CHAPTER OF THE OREGON ASSOCIATION FOR THE EDUCATION OF YOUNG CHILDREN  
Condado de Jackson Asociación del Oregon para la Educación de los Niños

February 26-27, 2016  
En Español el 27 de Febrero, 2016  
Medford, Oregon



# TOGETHER FOR CHILDREN CONFERENCE

Juntos para la Conferencia  
de los Niños

Information available online at

<http://www.oregonaeyc.org/>

